

appleton®

For the Life Scientist



Mega-App Polymerase

Robust Long Range PCR



Mega-App Polymerase

Your Perfect Partner for Long Range, Difficult PCR

Mega-App Polymerase is a superior performance hot-start enzyme which has been specifically engineered for long range PCR amplification of DNA fragments up to 35 kb. The polymerase remains inactive at ambient temperatures, minimising non-specific amplification and primer dimers during PCR set up. It is ideal for multiplex and colony PCR in high throughput applications. It comes with a 5x Mega buffer which has pre-added enhancers, stabilisers, MgCl₂ and dNTPs to maximise PCR yields, and works in fast or standard thermal cycling conditions. The enzyme generates 3'adenine overhangs on the PCR products which can then be cloned into TA vectors.

Main Features

- For long range PCR of amplicons up to 35kb
- Hot-start enzyme is inactive at ambient temperature for highly specific PCR
- Optimised buffer system with pre-added dNTPs and MgCl₂
- Works under standard or fast cycling conditions
- Clone PCR products into TA vectors
- Amplifies from complex GC- rich or AT-rich templates
- Suitable sample types: complex templates (GC rich and AT rich)/ crude samples / multiplex/ colony
- Other formats:
 - Mega-App Mix (2X): a pre-optimised ready-mix with pre-added MgCl₂, dNTPs, enhancers and stabilisers

Ordering Information

Product	ARP031	ARP033	ARP092
Mega-App Polymerase (5U/μl) &	250 units (1x 0.05ml)	1000 units (4x 0.05ml)	
5x Mega reaction buffer	2x 1ml	8 x 1ml	
Mega-App Mix (2X)			200 reactions (5x 1ml)

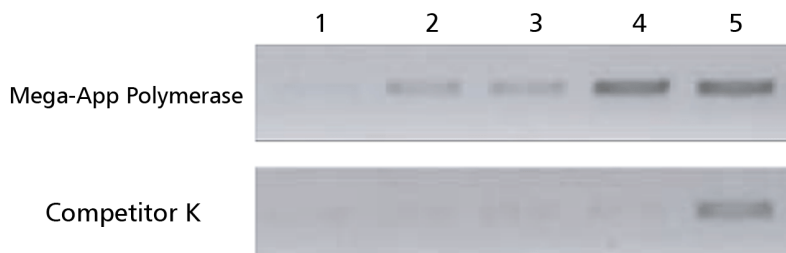


Figure 1: PCR amplification of a 25kb fragment of the beta-globin gene using Mega-App Polymerase. Human genomic DNA was serially diluted 2 fold from 100ng to 6.25ng. Lanes: 1 – 6.25ng, 2 – 12.5ng, 3 – 25ng, 4 – 50ng, 5 – 100ng

appleton®

Appleton Woods Ltd, New Lindon House, Catesby Park, Kings Norton, Birmingham, B38 8SE
Tel: 0121 458 7740 Fax: 0121 458 5510 E-mail: sales@appletonwoods.co.uk