



Hot AppTaq Polymerase

Fast, Sensitive and Hot-Start PCR



Hot AppTaq Polymerase

Your Perfect Partner for Highly Specific Hot-Start PCR

Hot AppTaq Polymerase is a high performance enzyme which has been specifically engineered for highly specific, hot-start PCR amplification of DNA fragments up to 6 kb. The polymerase remains inactive at ambient temperatures, minimising non-specific amplification and primer dimers during PCR set up. It is ideal for multiplex and colony PCR in high throughput applications. It comes with a 5x reaction buffer which has pre-added enhancers, stabilisers, MgCl₂ and dNTPs to maximise PCR yields, and works in fast or standard thermal cycling conditions. The enzyme generates 3'adenine overhangs on the PCR products which can then be cloned into TA vectors.

Main Features

- For hot-start PCR of amplicons up to 6kb
- Inactive at ambient temperature for highly specific PCR
- Optimised buffer system with pre-added dNTPs and MgCl₂
- Works under standard or fast cycling conditions
- Clone PCR products into TA vectors
- Suitable sample types: Low copy number templates/ GC/AT-rich/ mammalian genomic DNA/ blood / colony / methylated
- Other formats:
 - o Hot AppTaq Mix (2X): a pre-optimised ready-mix with pre-added MgCl₂,dNTPs, enhancers and stabilisers
 - o Hot AppTaq RedMix (2X): a ready-mix with a red dye for visualising PCR products by agarose gel electrophoresis

Ordering Information

Product	ARP021	ARP023	ARP072	ARP082
Hot AppTaq Polymerase (5U/μl) & 5x Appleton reaction buffer	250 units (0.05ml)	1000 units (4x 0.05ml)		
Hot AppTaq Mix (2X)	2x 1ml	8 x 1ml	200 reactions (5x 1ml)	
Hot AppTaq RedMix (2X)				200 reactions (5x 1ml)

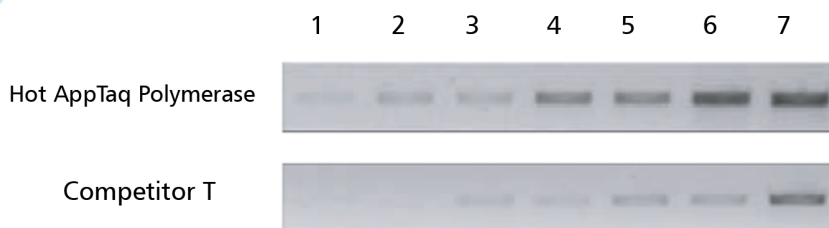


Figure 1: PCR amplification of a 2kb fragment of the LDHA gene using Hot AppTaq Polymerase. Human genomic DNA was serially diluted 2 fold from 100ng to 1.5ng. Lanes: 1 – 1.5ng, 2 – 3.1ng, 3 – 6.25ng, 4 – 12.5ng, 5 – 25ng, 6 – 50ng, 7 – 100ng

appleton®

Appleton Woods Ltd, New Lindon House, Catesby Park, Kings Norton, Birmingham, B38 8SE
Tel: 0121 458 7740 Fax: 0121 458 5510 E-mail: sales@appletonwoods.co.uk